

## How It Works



**Sign Up for Smart911**  
and create a secure Safety  
Profile for your household.



**If you ever call 9-1-1,**  
the call taker can see the  
emergency information you  
want them to see.



**Emergency Responders**  
can then use this key  
information to help you  
faster and more efficiently.

## Security and Privacy



### **You Decide What to Include**

Provide as much or as little information  
as you want. Smart911 only asks for  
information that is relevant to aid  
emergency response.



### **Only Seen If You Call 9-1-1**

Your information is only available to  
9-1-1 call takers and first responders  
if you have an emergency.



### **Industry Leading Security**

Your information is housed in top-tier  
secure facilities complete with 24/7  
physical security, video surveillance,  
and alarms. We utilize the same SSL  
certificate authority and encryption  
technologies used by leading  
financial institutions.



# Keep Your Loved Ones Safe.

Smart911 is the only way to provide  
lifesaving information directly to 9-1-1  
and first responders in an emergency.

Smart911 is free, private, secure, and  
protects **over 31 million people** nationwide.

## As Seen On...



**Smart911.com™**

Because every second counts. Sign up today.



**Smart911.com™**

Because every second counts. Sign up today.

99%

of Smart911 users would recommend Smart911 as an essential tool for personal safety.

11 minutes

The amount of time saved by Smart911 in response to a house fire in Michigan, saving the homeowner's life.

31.1 million

The number of residents protected by Smart911 nationwide.

## What Can My Smart911 Safety Profile Include?



### Family

Include all members of your household, including their photos. You can also add all landlines and mobile numbers and who they belong to.



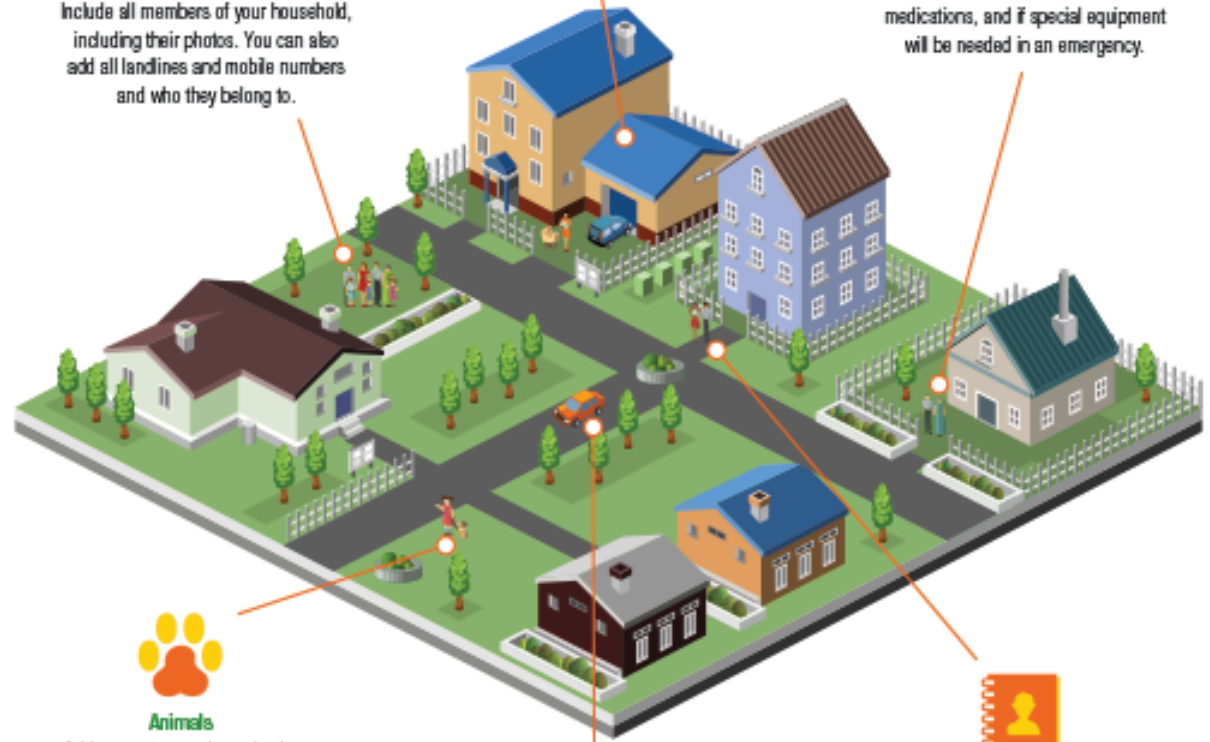
### Address Details

Let responders know how to access your home, bedrooms, utility shut offs, and if you live in a multi-unit building.



### Medical Information

EMS can be aware of medical conditions, medications, and if special equipment will be needed in an emergency.



### Animals

Add your pets, service animals, and livestock, including their names and vet information so responders are aware of them if they need to enter your home.



### Vehicles

Add details such as make, model, and license plate number in the event of an accident.



### Emergency Contacts

Include family members, friends, or neighbors who should be contacted in the event of an emergency.